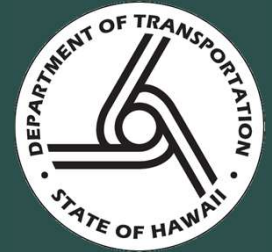
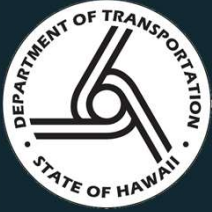


Hawaii

Department of Transportation

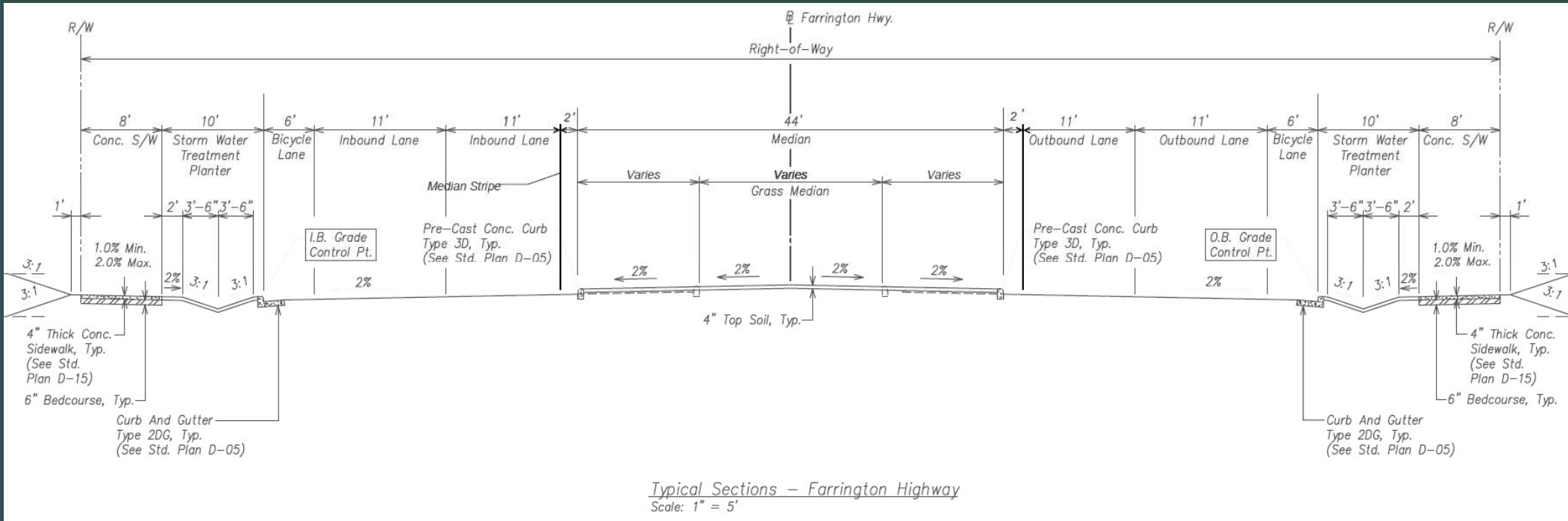


FARRINGTON HIGHWAY WIDENING,
KAPOLEI GOLF COURSE TO
FORT WEAVER ROAD



TYPICAL ROADWAY SECTION

- Four-lane divided roadway
- Accel/Decel/Turn lanes at intersections
- 11 feet wide travel lanes
- Sidewalks and bike lanes
- Swales

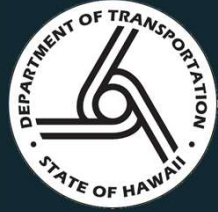




BICYCLE AND PEDESTRIAN COMFORT

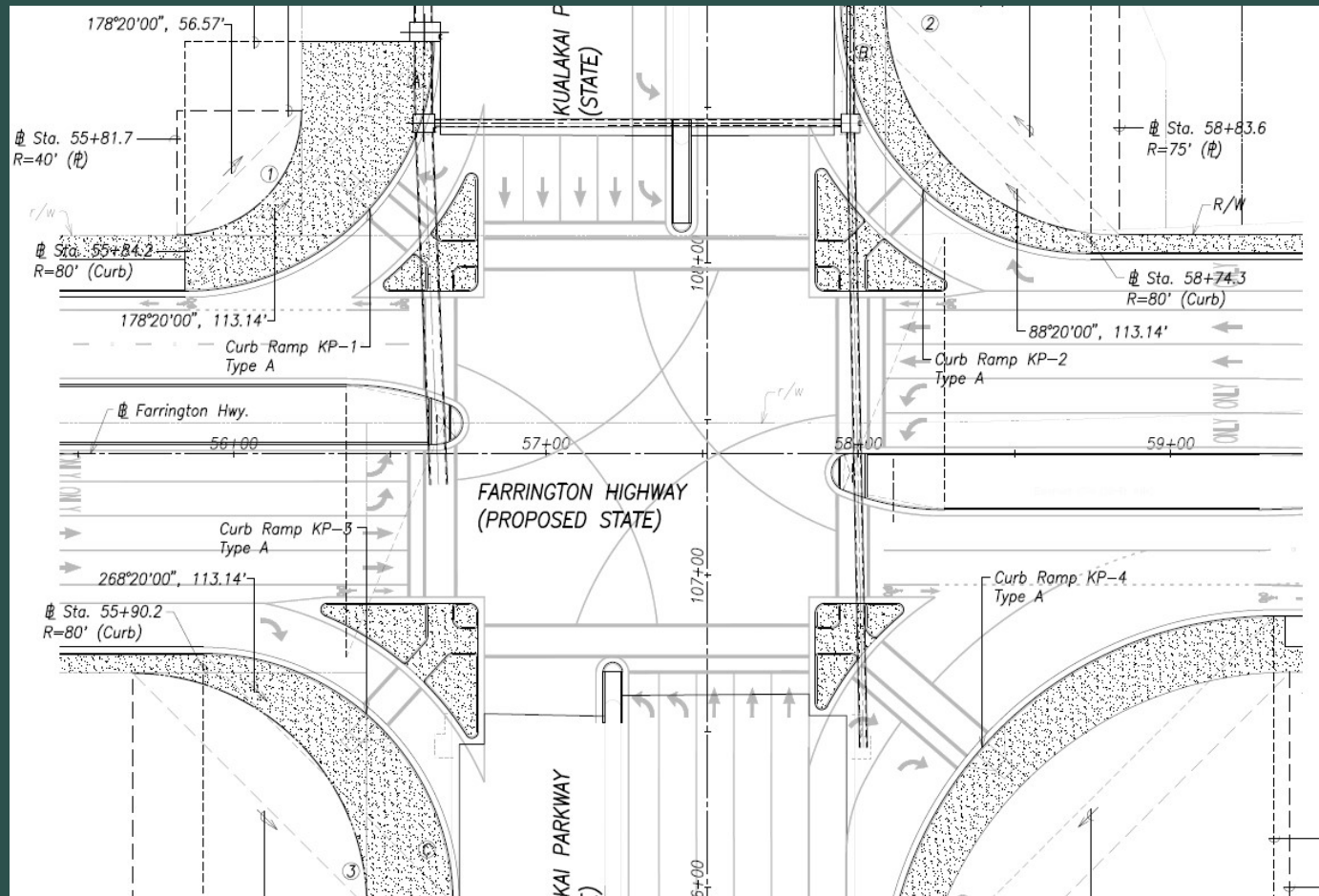


- According to HDOT's Complete Streets policy, the HDOT Highways Division plans, designs, constructs, and maintains its transportation facilities according to Complete Streets principles to provide safe mobility for all users including bicyclists, pedestrians, transit riders, freight movers, and motorists.
- The current project includes Complete Streets treatments such as bike lanes, sidewalks, crosswalks, pedestrian refuge islands, pedestrian signals, and lighting for the roadway and crossings.



KUALAKAI PARKWAY INTERSECTION

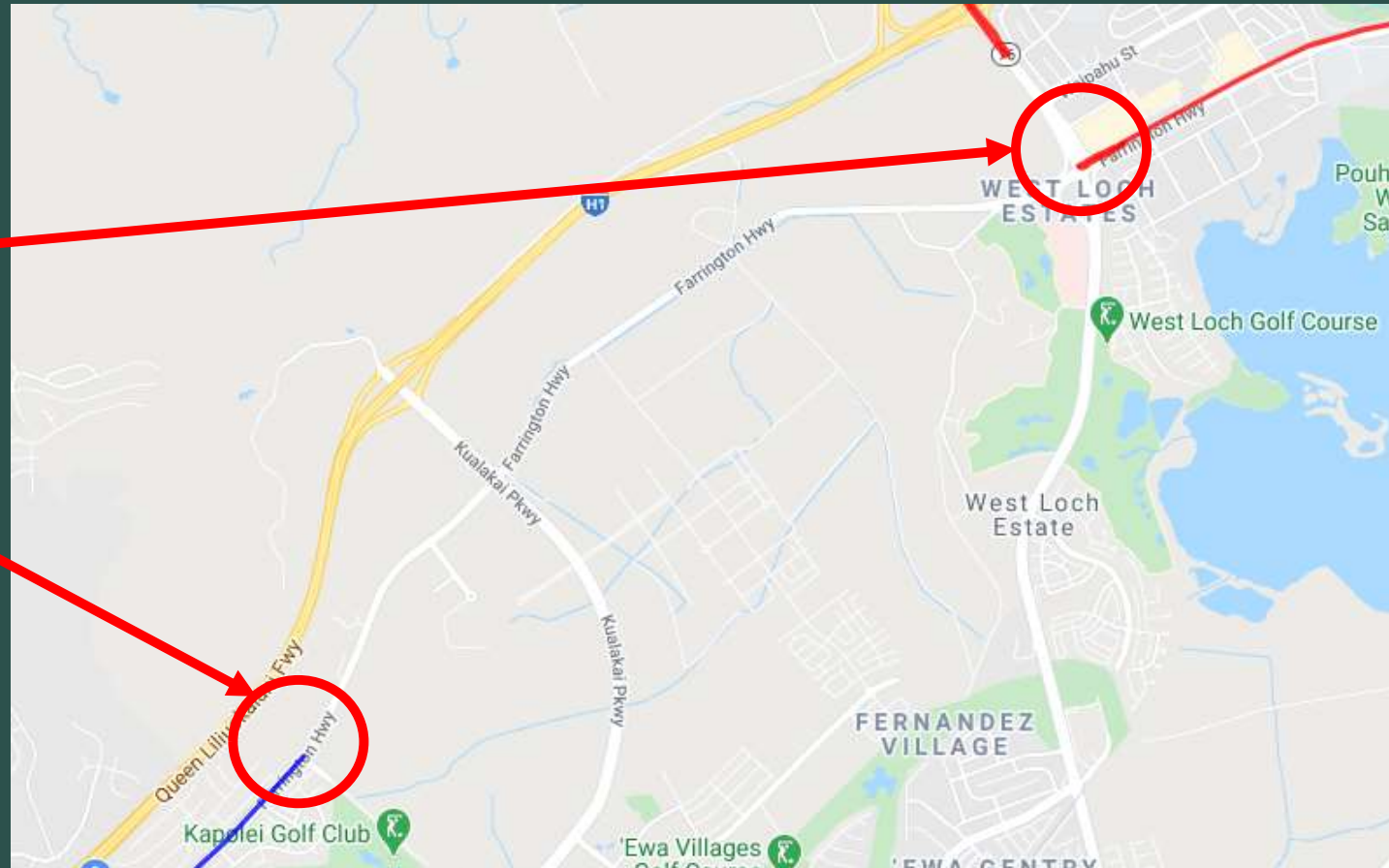
- Bike lanes
- Crosswalks
- Pedestrian refuge islands
- Pedestrian signals
- Sidewalks
- Street lighting

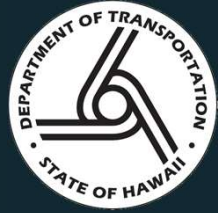




EXISTING BIKEWAY FACILITY MAP

- Total Connectivity: 7.557 miles
- Bikeway facility to the east of the proposed project, 2.0 miles long
- Bikeway facility to the west of the proposed project, 2.28 miles long
- Existing road does not have any bikeway facilities, adding the new bike lanes would add a 3.277 mile-long facility





BICYCLE AND PEDESTRIAN COMFORT



- The proposed bike lane is consistent with Bike Plan Hawaii's recommendation. Inexperienced users may use the 8-foot-wide sidewalk and experienced bicyclists can use the 6-foot-wide bike lane.
- There are also other parallel bike paths listed in the Oahu Bike Plan as part of the Hoopili development project (RD-10, Oahu Bike Plan). These additional paths would also provide a safe, connected facility for less experienced bicycle riders and pedestrians. These paths directly connect to the rail stations.



TIE IN TO THE HOOPILI COMMUNITY



- Speed limit of 35 MPH.
- Trees to be planted along entire alignment on both sides of alignment and along median.
- Street lighting along entire alignment.
- 8' wide sidewalks and 6' wide bikeway facilities on both sides of the alignment.
- Signalized intersections with pedestrian signals and crosswalks.